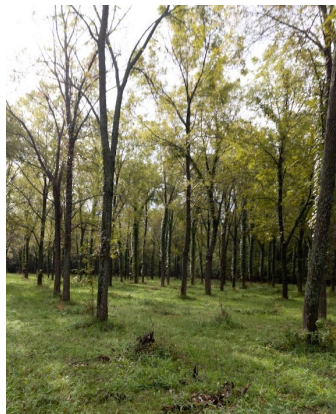




KANSAS RURAL CENTER

Our Mission: To promote the long-term health of the land and its people through research, education and advocacy that advance an economically viable, ecologically sound, and socially just food and farming system.

KRC believes that diversified farming systems hold the key to preserving, developing and maintaining a food and farming future that provides healthy food, a healthy environment and social structure, and meaningful livelihoods.



Study highlights key opportunities

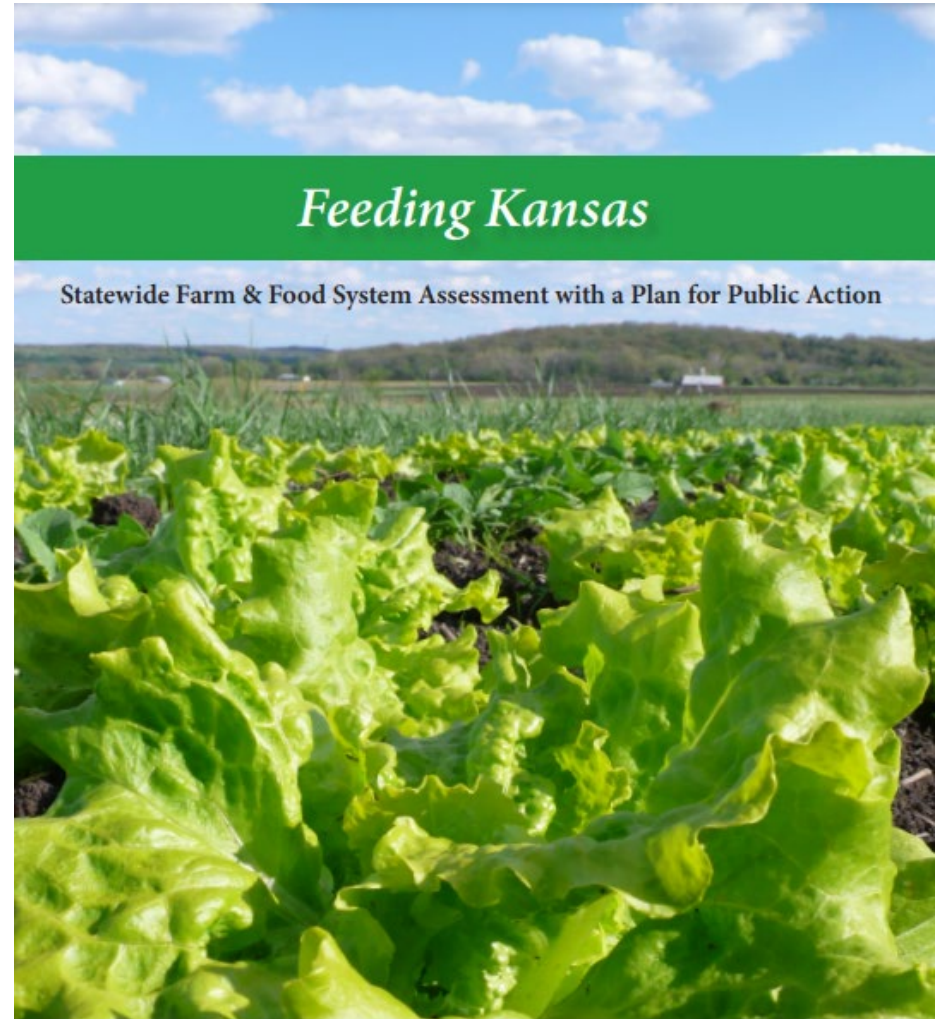
- **Procurement policies should prioritize Kansas grown fruit and vegetable purchasing at state and local government agencies and in public institutions.**

Need: Adopting such policies across state agencies and institutions would drive growth in production and consumption of Kansas-grown fruits and vegetables in Kansas by influencing distributors to purchase more Kansas-grown foods and providing other economic levers.

Continue to ramp up farm-to-school and farm-to-preschool activities. According to a Kansas health analyst, children who participate in growing foods are more open to trying different kinds of fruits and vegetables and are more likely to have better eating behaviors.

- Estimates show that each dollar spent on local food can have a multiplier around 1.73

(<https://calculator.localfoodeconomics.com/>)



November 2014



Why Local Food in School Meals?

- Supports local farmers, businesses and local economies
- Increases school meal quality and overall program participation
- Increases kids' willingness to try new fruits and vegetables
- Supports school wellness policies and broader school board priorities



Credit: USDA Farm to School Census



AGRICULTURAL PRODUCERS' TOOLKIT

Bringing the Farm to School

The Power of Farm to School

An Introduction to *Bringing the Farm to School Producer
Training Program*



Ongoing Work

- **Developing Online Farm to School resource hub for producers (<https://ksfarmtoschool.org/>)**
- **Video Series interviewing producers around the state who work with farm to school**
- **Upcoming workshop in SE Kansas on producer training**
- **Continuing to conduct producer trainings with support from K-State Research and Extension's Regional Food Systems Partnership Program**



FARM TO SCHOOL
KANSAS



**KANSAS
RURAL
CENTER**