



The Kansas Healthy Food Initiative

Presentation to the Kansas Senate Agriculture &
Natural Resources Committee

March 7, 2023

Agenda

- **KHFI Overview**
- **Featured Funded Projects**
 - Common Ground Producers & Growers
 - Grand Avenue Market
- **Questions**

Kansas Healthy Food Initiative

Mission: Increase access to affordable, healthy food to improve the health and economic development of Kansans and their communities.

KHFI provides:

- Technical assistance for projects throughout Kansas
- Financing for healthy food retail projects in low-resource and underserved areas of Kansas.



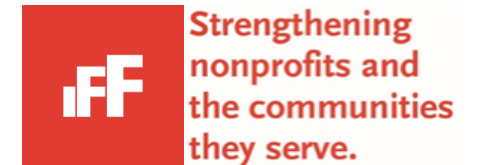
Partners:



KANSAS HEALTH
FOUNDATION

K-STATE
Research and Extension

Rural Grocery
Initiative



The FOOD
TRUST



What we provide: Technical Assistance



Impact
Investment
Center

7TH BIENNIAL
NATIONAL
RURAL GROCERY
SUMMIT
June 20-21, 2022

Drury Plaza Hotel Broadview
400 West Douglas Avenue, Wichita, KS

A poster for the 7th Biennial National Rural Grocery Summit. The background is a photograph of a grocery store's produce section with various vegetables like carrots, broccoli, and leafy greens. Overlaid on the image is a large, white, double-lined diamond shape. Text is centered within the diamond. At the bottom of the poster, the location is listed.

**APPLY TO THE GROCERY
BUSINESS TRANSITION
MENTORSHIP PROGRAM!**

The Grocery Business Transition Mentorship Program provides rural Kansas grocers with in-depth, customized technical assistance on a range of business transition topics. This program gives you the opportunity to work alongside a mentor to help plan the future of your grocery store.

**Applications are now open
through July 31!**

GROCERY
BUSINESS
TRANSITION
MENTORSHIP
PROGRAM

A flyer for the Grocery Business Transition Mentorship Program. The background is a blurred image of a grocery store aisle. The text is arranged in a clean, modern layout with a circular logo on the right side.

The Rural Grocery Initiative presents

**Rural Grocery
Succession
Planning**

Monthly Webinars

Join us to learn strategies for creating a prosperous and sustainable ownership transition.

Every third Thursday at 1:30 PM

Register online at www.ruralgrocery.org.

A yellow shopping cart icon with a sunburst effect behind it, set against a white background.

Grocery Store
Considerations
for City Leaders

Rural Grocery Initiative
Kansas State University
September 2021

A flyer for "Grocery Store Considerations for City Leaders". The background is a photograph of a shopping cart in a grocery store aisle, with people and shelves in the background. The text is positioned on the right side of the flyer.

What we provide: Financing

KHFI supports one-time investments that sustain or enhance the availability of healthy food at the retail level across Kansas

Examples of how KHFI funds may be used:

- Building renovation, expansion, or construction of grocery stores, farm stands, processing/packing sheds, and other healthy food retail outlets
- Purchase or upgrade of equipment, including coolers, point of sale systems, farm machinery, vehicles, etc.
- Initial one-time startup costs, including inventory, shelving, etc.

Loan/grant mixes are available for eligible projects.

- Loan/grant funding packages:
Comprised of 15% grant funding, with grant caps dependent on total request.
- Expanded parameters for BIPOC-led projects:
Up to 20% of the total KHFI funding package can be a grant.



KANSAS HEALTH
FOUNDATION

Program Funder (2017 – 2023)

- Invested \$6 Million in Healthy Food Financing Revolving Loan and Grant Fund
- Provided operational support for partner organizations over last 6 years



PARTNERS

K-STATE
Research and Extension

Rural Grocery Initiative

Food Access Organization

- Provides Technical Assistance
- Handles promotion and outreach
- Serves as first point of contact for new projects



Financial Partners

- Provides Technical Assistance (Network KS)
- Reviews financial applications
- Disburses funds
- Project roles split at \$75,000

**Strengthening
nonprofits and
the communities
they serve.**



The **FOOD
TRUST**



Evaluation Partner & National HFFI Liaison

- Leads evaluation efforts, to include quarterly reporting on Program Impact, deep dive case studies, and more
- Connect KHFI to national conversation on Healthy Food Financing Initiatives

KHFI Impact

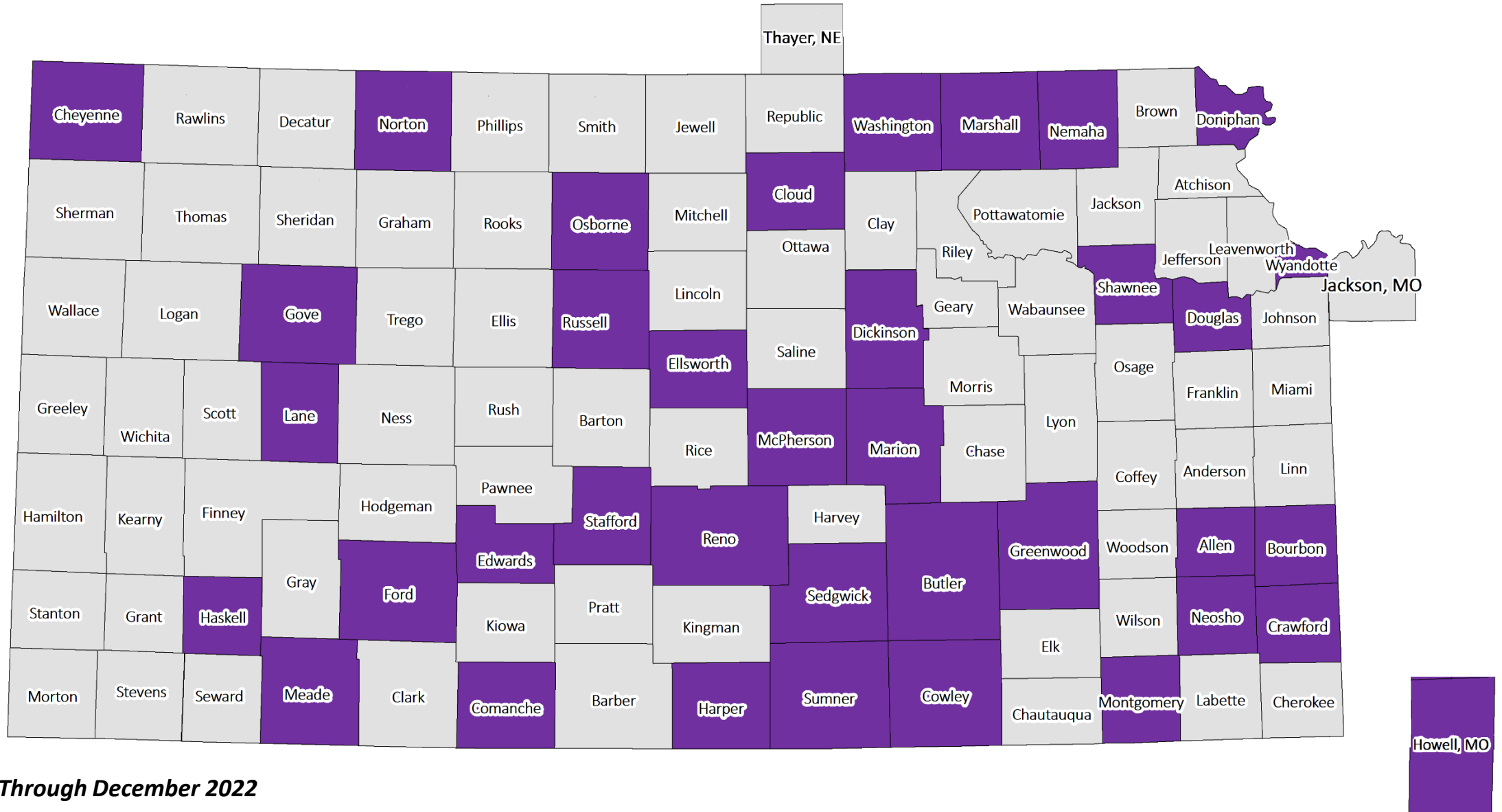
Impact Area	Cumulative Totals
OVERALL REACH	119 applications received
	62 projects funded
	\$3,885,937 funded
	160,451 sq. ft. of food retail spaced expanded or renovated
	1,060 technical assistance inquiries supported
GEOGRAPHIC REACH	37 counties funded
JOBS*	424 jobs retained / supported
	188 jobs created
LEVERAGE*	\$14.6 M in committed funding from other sources
RESIDENTS SERVED*	259,503 residents served

Data collected through December 2022

*These metrics are only collected for loan/grant funded projects



KHFI Funded Projects Across Kansas



**Through December 2022*

KHFI Featured Funded Projects

Common Ground Producers and Growers Mobile Market

- City: Wichita County: Sedgwick
- Location Type: Urban
- Background: Common Ground Mobile Market provides fresh produce to seniors, low-income, underserved individuals in the Wichita Metropolitan area by partner with area growers.
- KHFI funding: \$20,000 Grant
- Funding use: Grant funds used to purchase materials and supplies for production and invest in capital improvements at the farm hub.

>>WATCH: Overview of CGPG







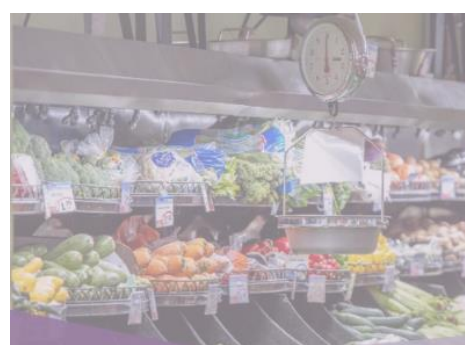
Grand Avenue Market

- City: Plains County: Meade
- Location Type: Rural
- Background: When the previous grocery store closed over 20 years ago in Plains, KS, a nonprofit organization, Community Enhancement Foundation of Plains, formed to identify a strategy for returning access to healthy food to the community of Plains. Many years of community fundraising and volunteerism, funding applications and learning finally led to the opening of the Grand Avenue Market in December 2021.
- KHFI funding: \$660,458 Loan-Grant Mix
- Funding use: Equipment & initial inventory

Photo Credit: IFF



TECK FARMS
Hutchinson, KS



SUPERMART EL TORITO
Topeka, KS



ST. FRANCIS SUPER'S
St. Francis, KS



MILDRED STORE
Mildred, KS



BLUESTEM MERCANTILE
Leon, KS



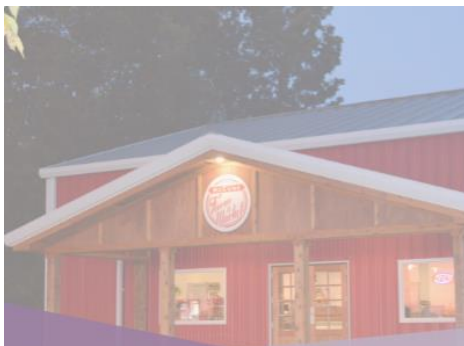
PEARSONS FARMS
Wichita, KS



GRAND AVENUE MARKET
Plains, KS



WHITE'S FOODLINER
St. John, KS



MCCUNE FARM TO MARKET
McCune, KS



MARMATON MARKET
Moran, KS



WILSON FOODS
Wilson, KS



MEDITERRANEAN MARKET
Lawrence, KS



TECK FARMS
Hutchinson, KS



SUPERMART EL TORITO
Topeka, KS



ST. FRANCIS SUPER'S
St. Francis, KS



MILDRED STORE
Mildred, KS



BLUESTEM MERCANTILE
Leon, KS



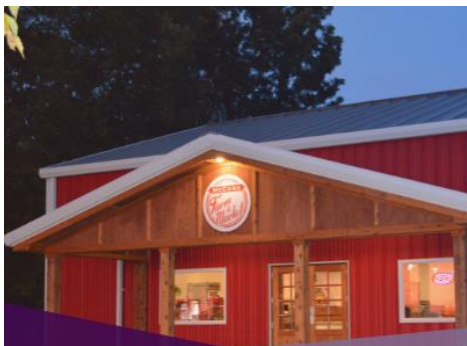
PEARSONS FARMS
Wichita, KS



GRAND AVENUE MARKET
Plains, KS



WHITE'S FOODLINER
St. John, KS



MCCUNE FARM TO MARKET
McCune, KS



MARMATON MARKET
Moran, KS



WILSON FOODS
Wilson, KS



MEDITERRANEAN MARKET
Lawrence, KS

Questions?



khfi@ksu.edu

www.kansashealthyfood.org