

---

# Understanding the Role of the Board of Emergency Medical Services



---

Kansas Board of Emergency Medical Services



## Mission:

The Kansas Board of Emergency Medical Services exists, primarily, to ensure that quality out-of-hospital care is available throughout Kansas. This care is based on the optimal utilization of community resources that are consistent with the patient's needs. The delivery of optimal care is supported through the adoption of standards; definition of scopes of practice; and provision of health, safety, and prevention education and information to the public, Emergency Medical Services services/agencies Emergency Medical Services providers/instructors, related health care professionals, and other public service and political entities.

## Powers/Duties of KBEMS

- Adopt any rules and regulations necessary to carry out the provisions of the EMS Act;
- review/approve the allocation and expenditure of moneys appropriated for EMS;
- conduct hearings for all regulatory matters concerning ambulance services, attendants, EMS educators and providers of training;
- submit a budget to the legislature for the operation of the board;
- develop a state plan for the delivery of emergency medical services;
- enter into contracts to carry out the duties and functions of the board;
- review/approve all requests for state and federal funding involving KS EMS projects
- approve all training programs for attendants, EMS educators and prescribe certification application fees by rules and regulations;
- approve methods of examination for certification of attendants, EMS educators and prescribe examination fees by rules and regulations;
- appoint a medical advisory council to advise and assist the board in medical standards and practices as determined by the board.
- approve providers of training by prescribing standards and requirements by rules and regulations and withdraw or modify such approval in accordance with the KARS



Kansas Board of Emergency Medical Services

## KBEMS Composition

### 15 Member Board

**3 physicians active in Emergency Medical Services**

**5 EMS attendants**

- 3 attendants actively involved in EMS, at least 2 from a volunteer EMS
- 1 educator
- 1 member of a firefighter unit providing EMS

**1 hospital administrator actively involved in EMS**

**2 county commissioners at least one from a county < 15,000**

**4 Legislative Members**

- 1 member of the KS Senate appointed by the President of the Senate
- 1 member of the KS Senate appointed by the minority leader
- 1 member of the KS House of Representatives appointed by the Speaker of the House
- 1 member of the KS House of Representatives appointed by the minority leader



Kansas Board of Emergency Medical Services

## Standing Committees

---

- **Planning & Operations**
- **Education & Examination**
- **Executive**
- **Investigation**



---

Kansas Board of Emergency Medical Services

## Committee Membership

---

- **7 voting members**
  - At least one MD,
  - At least 2 attendants,
  - At least a commissioner/legislator
  - Additional members (+3)
- **5 voting members (Investigations Cmte)**

At least 1 attendant, 1 EMS Educator, 1 MD, 1 Com./Leg., +1



---

Kansas Board of Emergency Medical Services

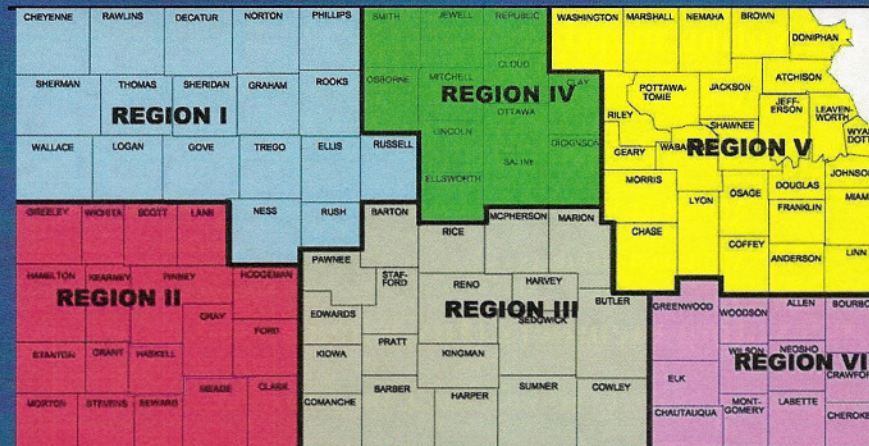
## Medical Advisory Council

- **Mission:** to advise and assist the board in medical standards and practices
- **Minimum of 6 EMS physician members**
  - 2 EMS physicians from urban services
  - 2 EMS physicians from rural services
  - 1 EMS physician from an EMS flight service
  - 1 EMS physician from a fire-based EMS service
  - 1 EMS physician who is a KBEMS Board Member



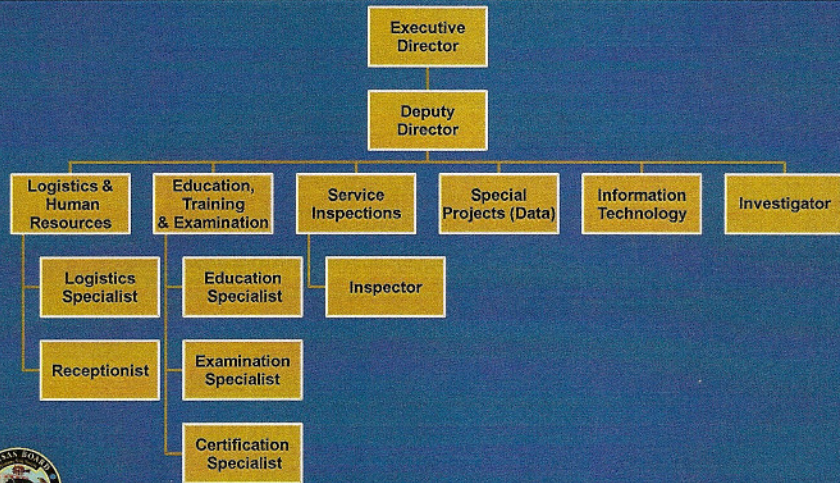
Kansas Board of Emergency Medical Services

## EMS Regional Councils



Kansas Board of Emergency Medical Services

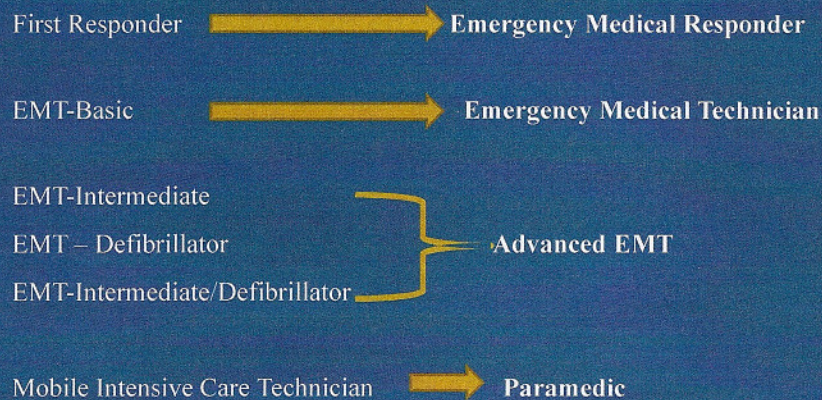
## Board Staff



Kansas Board of Emergency Medical Services

9

## EMS Attendants



Kansas Board of Emergency Medical Services

# CERTIFICATION

---

FR: 85	EMR: 439	
EMT-B: 969	EMT: 4,812	
		Lost: 1266
EMT-I: 873	}	AEMT: 315
EMT-D: 18		
EMT-I/D: 186		
Paramedic: 2258	<b>Total attendants: 9955</b>	



Kansas Board of Emergency Medical Services

# OPERATIONS

---

Three services will no longer be providing EMS; Erie which was taken over by Neosho Memorial Regional Medical Center Ambulance, Atchison Hospital and Rescue was taken over by Techs INC., and Northwest Kansas Ambulance was taken over by Sherman County. Currently there are 173 Services and 707 vehicles.

### CURRENT STATUS OF SERVICES:

	Aug. 2012	Sept. 2012	Nov. 2012	Jan 2013
Type I	35	35	37	37
Type II	52	41	28	28
Type IIA	73	85	98	99
Type V	9	9	9	9
<b>Total</b>	<b>169</b>	<b>170</b>	<b>172</b>	<b>173</b>

### CURRENT OPERATOR STATUS

County/City.....93	Hospital Based.....26	Private.....25
Fire Department Based.....27		LEO.....2



Kansas Board of Emergency Medical Services

# EDUCATION

---

## EDUCATORS

Training Officers I: 253 (lost 55)    Training Officer II: 119 (lost 20)  
Instructor-Coordinators: 215 (lost 19)    EMS Educators: 587    Total

**SPONSORING ORGANIZATIONS: 444 ea.**

## COURSE APPROVAL

Initial Courses: 179    Transition Courses: 322  
Continuing Education: 187

**CERTIFICATION EXAMS: 2,630**



---

Kansas Board of Emergency Medical Services

# Legislative Interaction

---

- **KBEMS Legislation (statutes/regulations)**
- **Legislation w/ potential impact on Kansas Emergency Medical Services**
- **Coordinates with other state agencies regarding potential legislation.**
- **Provide EMS Data to Legislators regarding their District upon request.**
- **Sen. Emler and Sen. Faust-Goudeau**
- **Rep. Swanson and Rep. Henderson**



---

Kansas Board of Emergency Medical Services

# Kansas Interactions

<b>KDHE –</b>	<b>KS Association of Counties</b>
<b>Board of Nursing</b>	<b>Board of Pharmacy</b>
<b>Board of Education</b>	<b>KBI</b>
<b>Board of Regents</b>	<b>Board of Healing Arts</b>
<b>Board of Pharmacy</b>	<b>Homeland Security</b>
<b>KBI</b>	<b>KDOT</b>
<b>Board of Healing Arts</b>	<b>KS Medical Society</b>
<b>EMS Regional Councils</b>	<b>KEMSA</b>
<b>County/City Governments</b>	<b>KEMTA</b>
<b>Medical Advisory Council</b>	<b>KanAAMS</b>
<b>KS Hospital Association</b>	<b>MARCER</b>
<b>Dept. of Corrections</b>	<b>Local hospitals, amb svcs, fire dept</b>
	<b>KS State Firefighters Association</b>
	<b>Educational Institutions/Programs</b>



Kansas Board of Emergency Medical Services



**Steven Sutton**  
Executive Director  
900 SW Jackson, Room 1031  
(785) 296-7296  
[steve.sutton@ems.ks.gov](mailto:steve.sutton@ems.ks.gov)



Kansas Board of Emergency Medical Services