



Presentation to:

The Joint Committee on Kansas Security

Topic: Statehouse Security

Presenter:

Captain Amber Harrington

Lt. Eric Hatcher

Kansas Highway Patrol –

Troop K

October 2, 2019



Security Service Overview:

Major Josh Kellerman (Special Operations Commander)

- Capt. Amber Harrington (Troop K Commander)
 - Troop K Headquarters (Docking State Office Building)
- Six (6) Lieutenants:
 - One (1) Administrative Lieutenant
 - Three (3) Field Lieutenants
 - One (1) Statehouse Lieutenant
 - One (1) PRO/PIO Lieutenant

Twenty (20) Full-Time (Uniformed) Officers:

- Ten (10) assigned to street patrol
 - Three (2) assigned to Bicycle Unit
 - Two (2) assigned to Investigative/C.I. Unit
- Three (3) assigned to Cedar Crest
- Three (3-4) assigned to Statehouse



Security Services Overview Cont...

- Twenty-Seven (26) (Uniformed) Officers
- Nineteen (19) Part-Time (Suit & Tie) Officers
 - Statehouse, Insurance, Judicial Center, Memorial Hall & Zibell Buildings
- Fifteen (15) Capitol Area Guards
 - Statehouse, CSOB, LSOB, ESOB, Scott Building, Mills Building, and Central Monitoring
- Four (4) Communication Specialists
- Two (2) Clerical Staff
- Sixty-Six (66) Employees

Statehouse Security:

Current services provided:

- Five (5) Full-Time (Uniformed) Officers (LT Included)
- Five (5) Part-Time Officers
- Three (3) Capitol Area Guards (Day, Evening & Night Shift Hours)
- Officers and Guards conduct foot patrols; respond to calls for service; provide additional coverage for special events, etc.
- Troop K Officers are currently tasked with screening all visitors to the Statehouse



Statehouse Security Cont...

- Monitoring station located in Visitor's Center (back-up for Central Monitoring) has been updated with a new computer and a larger single monitor.
- The alarm panel (as shown on the right) allows Officers to broadcast automated alerts/warnings for fire, active shooter and emergency type situations.



Central Monitoring:

Moved in new office space:

- Thanks to the collaborative efforts of the DofA (OFPM), KHP Fiscal, KHP IT, and Troop K
- Central Monitoring still performs the same duties as before
- The updated Central Monitoring has more monitors and more functional space

286 Cameras:

- Pan/tilt/zoom (PTZ) and fixed
- 109 cameras assigned to the Statehouse (86 interior / 23 Exterior)



KANSAS HIGHWAY PATROL

Old Central Monitoring





KANSAS HIGHWAY PATROL

New Central Monitoring



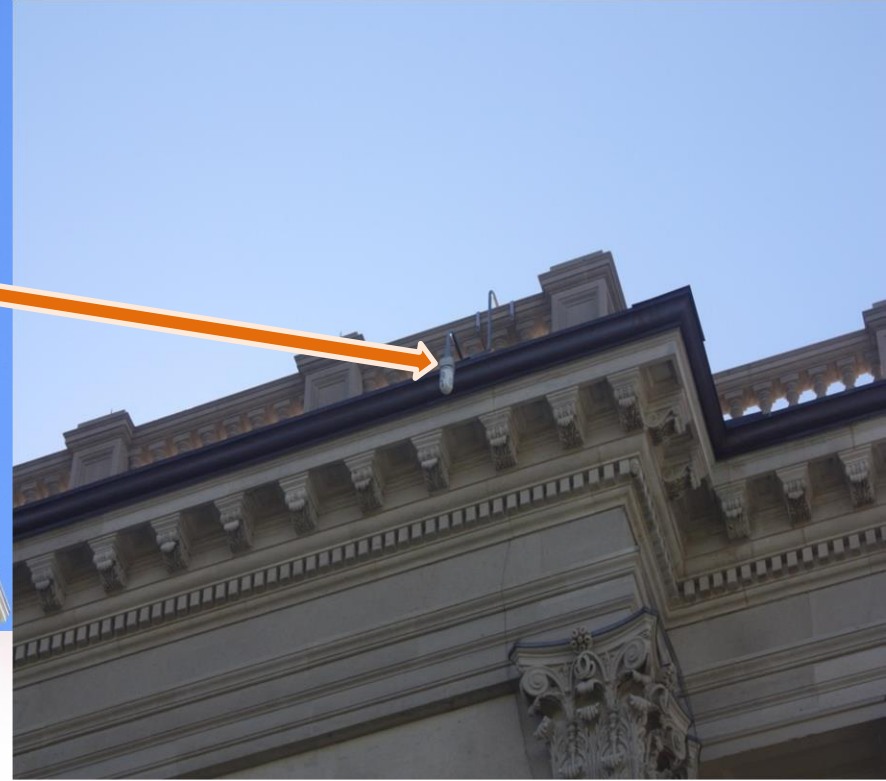
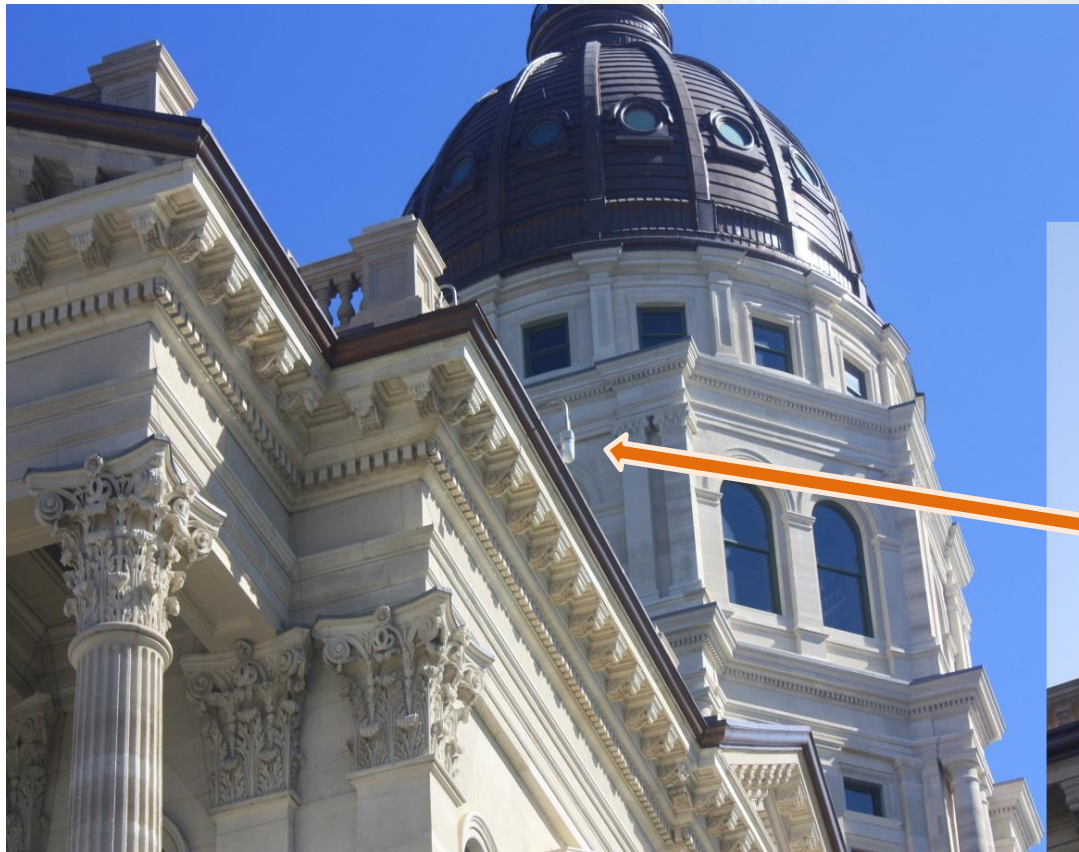
New Central Monitoring Cont'd...





KANSAS
HIGHWAY PATROL

Statehouse FLIR Cameras





KANSAS HIGHWAY PATROL

Statehouse FLIR Cameras

SH NW Perimeter FLIR Camera 2 - (FLIR) - 392 (323)



SH NW Perimeter FLIR Camera 2 - (FLIR) - 392 (323)





KANSAS HIGHWAY PATROL

FLIR Camera (Traditional Low Light vs. FLIR)

SH NW Perimeter FLIR Camera 2 - (FLIR) - 392 clip
x0



1

SH NW Perimeter Thermal FLIR Camera 1 - (FLIR) - 391 clip
x1



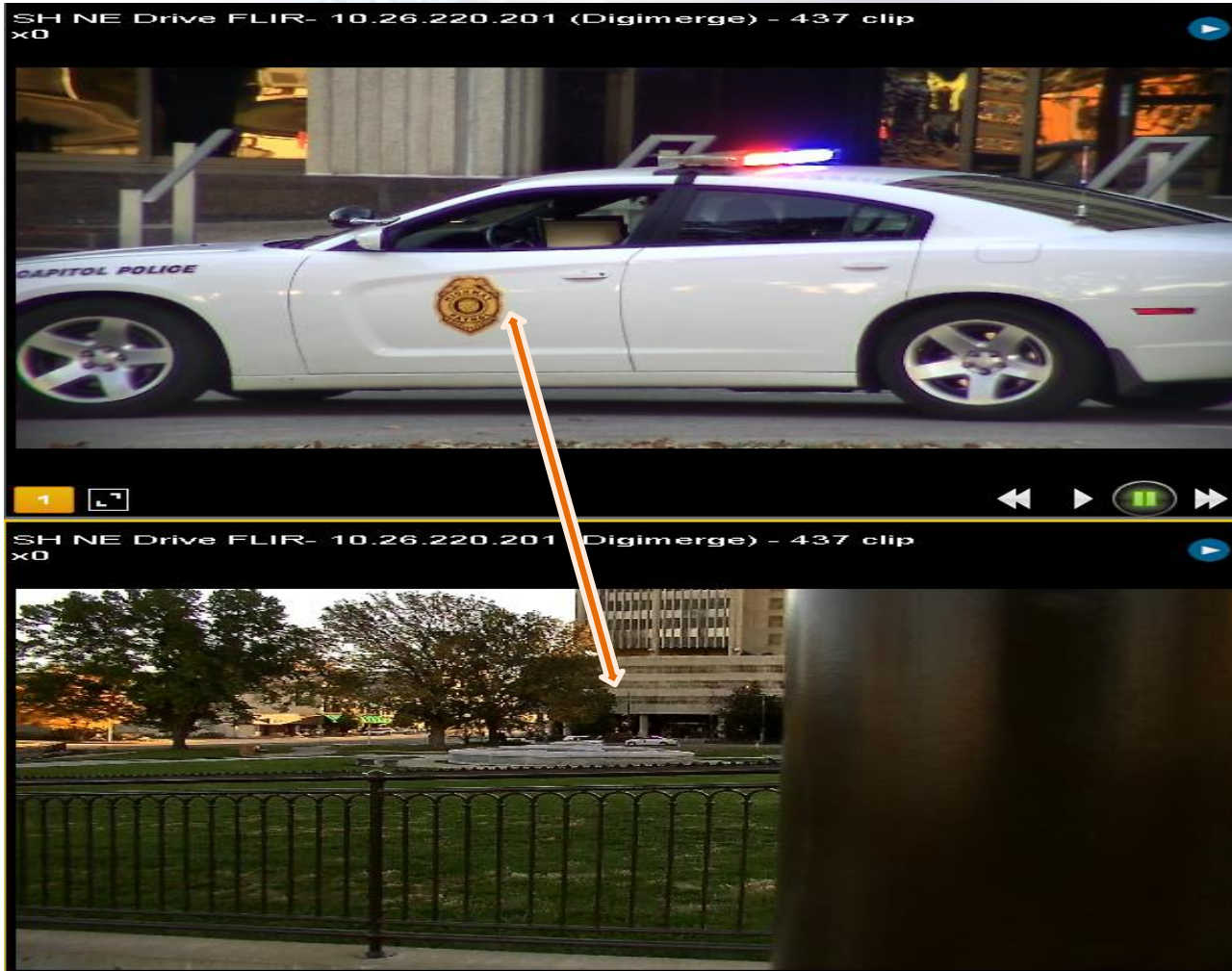
Statehouse Infrared Cameras



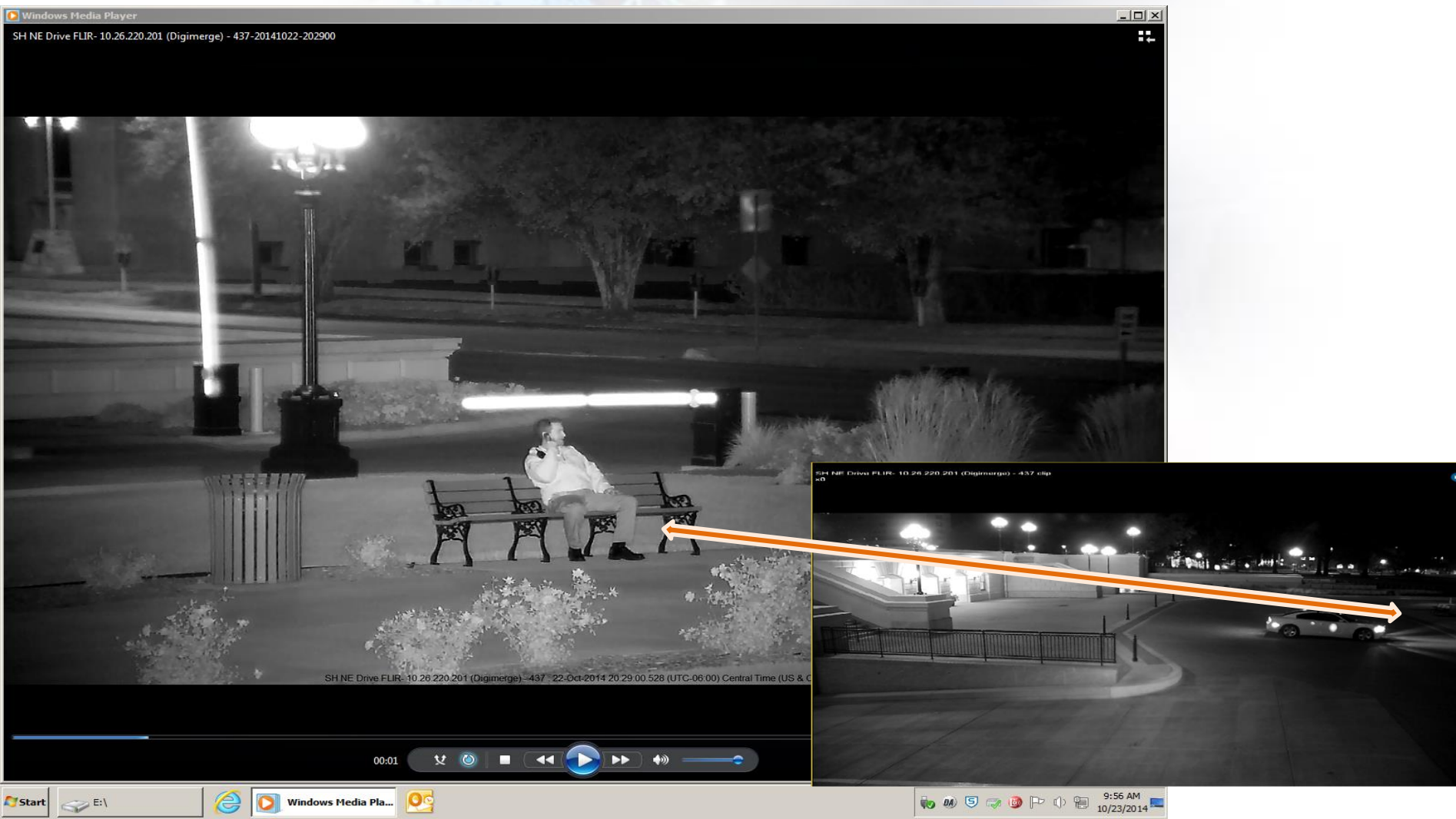


KANSAS HIGHWAY PATROL

Statehouse (North Drive) Camera



Statehouse Infrared Camera (Low Light)



Statehouse Security Screening:

- Currently operating on the older security screening equipment:
 - One (1) Astrophysics, Inc. X-Ray inspection systems
 - One (1) Garrett PD 6500i magnetometer “metal detector” systems
- Each visitor must submit to our screening processes





KANSAS
HIGHWAY PATROL

Old X-Ray Equipment



New Screening Equipment:

With the assistance of the both the Legislative Branch and the Kansas Highway Patrol new equipment has been purchased. The new equipment includes....

- Two (2) new Astrophysics x-ray machines for the visitor center
- Two (2) new metal detectors for the visitor center. Not currently setup
- One (1) new large Astrophysics x-ray machine for the loading dock





Statehouse Security Screening Cont...

Security Screening Operations Overview:

- Security screening primarily serves to deter criminal activity (i.e. alcohol, knives, etc.)
- Used to identify and intercept unlawful firearms, weapons, explosives and/or contraband from entering the State Capitol
- Affords officers the opportunity and ability to properly monitor visitors to the Statehouse (throughput process)
- Officers are required to adhere to all federal and state laws pertaining to concealed carry and the performance of I.D. checks

Screening Processes for Statehouse:

- ✓ Visitors are asked to remove and place all items in a bin(s) for screening
- ✓ All removed items, bags, packages and purses are scanned
- ✓ Individual is screened when passing through the magnetometer
- ✓ If the magnetometer alerts or sounds, the officer will attempt to determine a cause
- ✓ If a firearm is located, the officer will instruct the individual to keep the firearm on their person, while confirming that the concealed firearm is a “*handgun*” K.S.A. 21-6309, 75-7c21, & 75-7c24

Statehouse Security Screening Cont...

When conducting security screening checks, our officers routinely check for the following:

- Suspicious activities and/or behavior
- Unlawful and/or restricted weapons, firearms or other items, in accordance with K.S.A. 21-6301, 21-6302 and 21-6312 (Explosives)
 - Possession or carrying “any bludgeon, sand club, metal knuckles or throwing star”;
 - Possession of “any device or attachment of any kind designed, used or intended for use in suppressing the report of any firearm”;
 - Carrying concealed “a billy, blackjack, slung shot or any other dangerous or deadly weapon”;
 - Persons < 21 carrying concealed “any pistol, revolver or other firearm”;
 - Possession or carrying “a shotgun with a barrel less than 18” in length” or automatic firearm;
 - “concealed explosives” (Class A misdemeanor);
 - Possessing with intent to use any unlawful instrument as defined in K.S.A. 21-6301 (i.e. dagger, dangerous knife, any other dangerous or deadly weapon, etc.)

Statehouse Security Screening Cont'd...

Speaker Boxes:

- Speaker boxes are located around the Statehouse which make it easy to contact Capitol Police Officers
- Pressing the button on the speaker box will contact Central Monitoring which allows for direct communications
- Nearly all the speaker boxes are found next to blue lights
- Majority of the speaker boxes are located next to entry/exit doors





Active Shooter Training...

Active Shooter is offered by the Kansas Highway Patrol Troop K:

- KASM (Kansas Active Shooter Mitigation) training is offered to State employees
- Contact your Public Resource Officer in your area (KHP website WWW.Kansashighwaypatrol.Org)



**KANSAS
HIGHWAY PATROL**



Amber Harrington, Captain

Kansas Highway Patrol-Troop K

915 SW Harrison Street

Topeka, Kansas 66612

Amber.Harrington@ks.gov

O - 785-296-3475

C – 785-213-5977