

STATE OF KANSAS



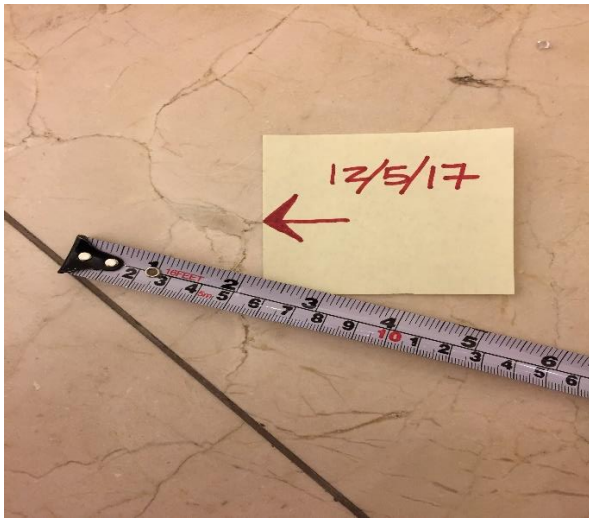
OFFICE OF FACILITIES & PROPERTY MANAGEMENT
700 SW HARRISON SUITE 1200
TOPEKA, KS 66603
FRANK BURNAM, DIRECTOR

PHONE: (785) 296-8070
FAX: (785) 296-3456
Frank.Burnam@ks.gov
<http://www.admin.ks.gov>

GOVERNOR JEFF COLYER, M.D.
SARAH SHIPMAN, SECRETARY

Capitol Visitor Center Updates

Marble Floor Repairs:



OFPM contracted with Lardner Monuments to make 14 repairs in late December 2017 and early January 2018. Those repairs addressed the worst areas and we haven't had to make additional repairs since. Each repair cost \$100 and involved a colored epoxy material injection.

OFPM has changed our cleaning and maintenance of this floor to hand mop only and eliminated use of our floor machine.

Visitor Center Signage:



OFPM has contracted KNOX Signs & Graphics to install 10 inch dark bronze cast aluminum letters over center arch of the Visitor Center entrance to identify public entrance.



OFPM is working on ways to assist public in way finding from both street and public visitor parking lots. This will eliminate signs like those shown above which detract from grounds.

STATE OF KANSAS



OFFICE OF FACILITIES & PROPERTY MANAGEMENT
700 SW HARRISON SUITE 1200
TOPEKA, KS 66603
FRANK BURNAM, DIRECTOR

PHONE: (785) 296-8070
FAX: (785) 296-3456
Frank.Burnam@ks.gov
<http://www.admin.ks.gov>

GOVERNOR JEFF COLYER, M.D.
SARAH SHIPMAN, SECRETARY

Proposed Flag Pole (north entrance):



OFPM is considering addition of 40' flag pole with base for the north entrance to the Capitol. We are currently evaluating both design and cost. Location as indicated above.